



Network for  
Eco-Innovation  
Investment

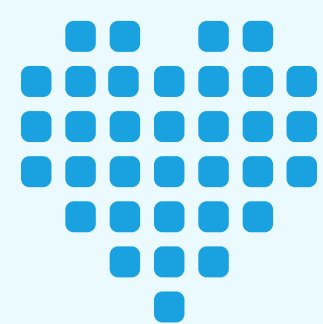
# ECO-INNOVATION

aims at significant and demonstrable progress towards the goal of sustainable development. It is a large and fast growing market in the EU and globally.

INNEON connects innovators and investors in the EU to extend the funding sources for eco-innovation

To find out more visit:

[WWW.INNEON.EU](http://WWW.INNEON.EU)



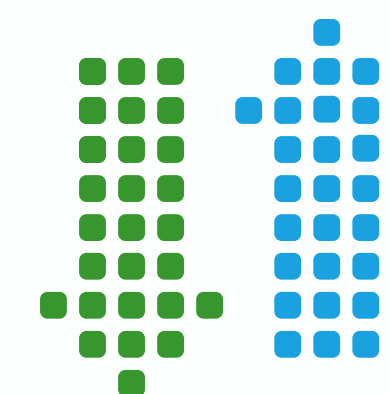
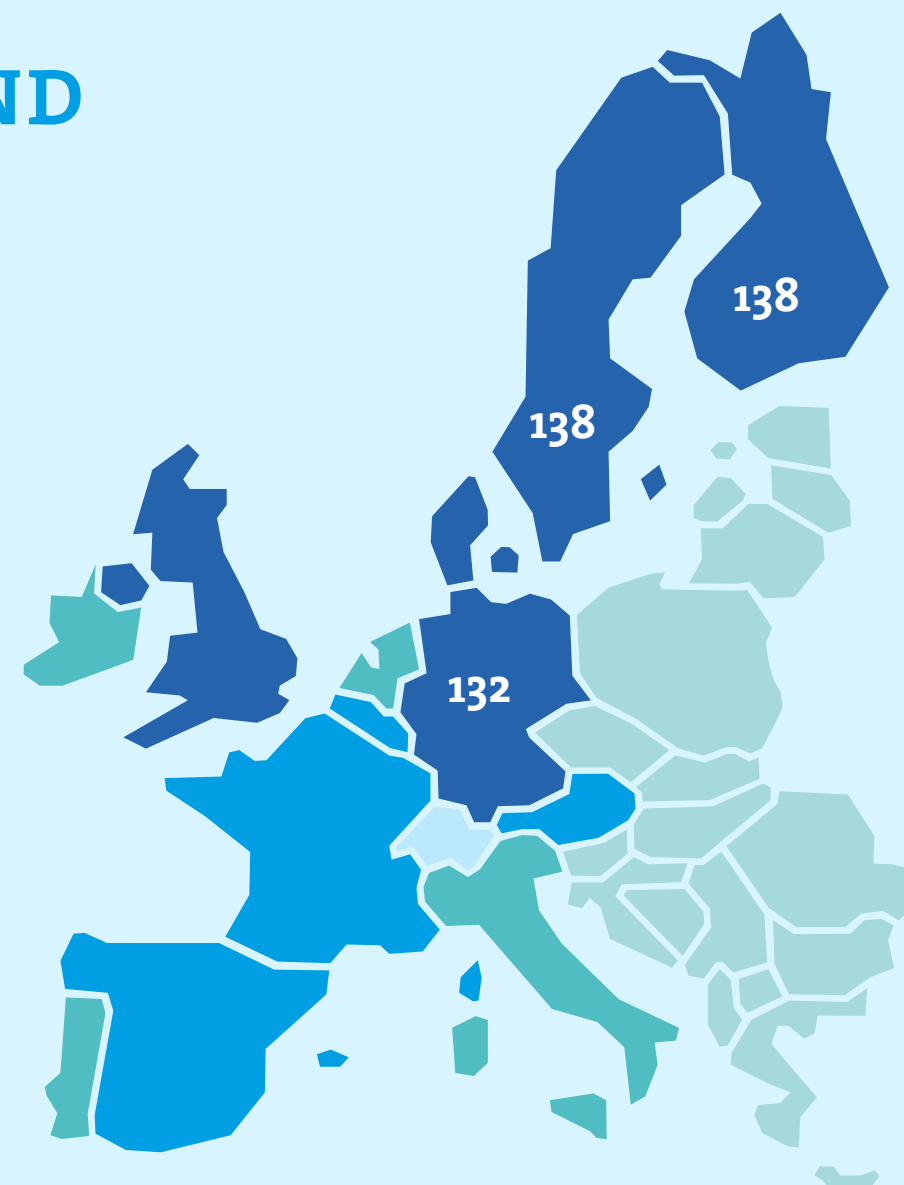
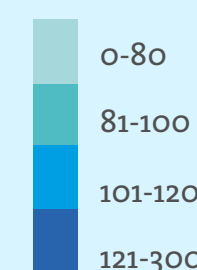
**58% OF UK BUSINESS ANGELS**, invest outside their **home region** in the UK  
**20%** invest internationally

Source - EC Eco-Innovation Action Plan FAQs

## SWEDEN, FINLAND AND GERMANY

are top ranked in the **Eco-Innovation Performance** of EU-28 member states in 2013

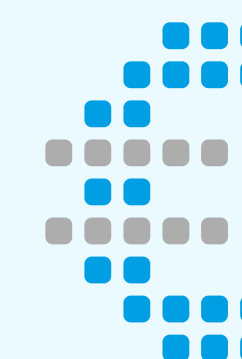
Source - EU Eco-Innovation Observatory database



## GREENHOUSE GAS EMISSIONS

have **decreased** since 1990 in Europe by **19%** despite a **45% increase** in economic output

Source - EEA, SoER 2015



Eco innovation has a turnover of around

**€227 BILLION = 2.2% EU GDP**

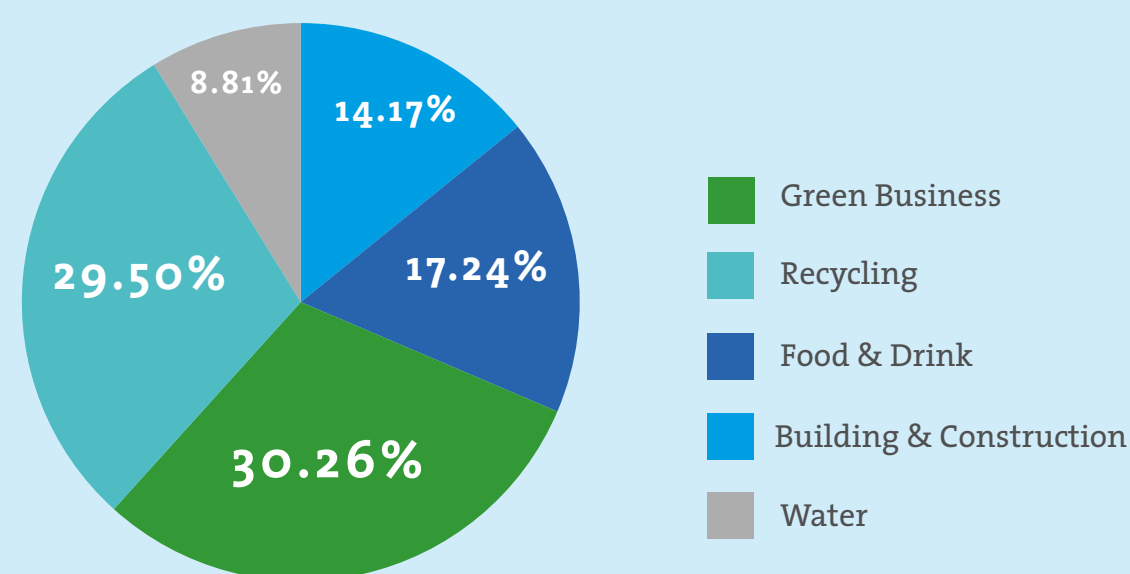
employing **3.4 million people** in the EU

Source - EC Eco-Innovation Action Plan FAQs

## 200 PROJECTS,

involving more than **650 organisations** in **five** sectors have been selected, since the EU Eco-Innovation programme was launched in 2008

Source - European Commission

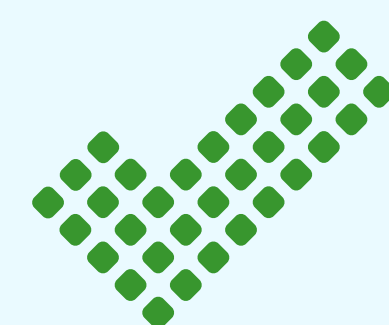
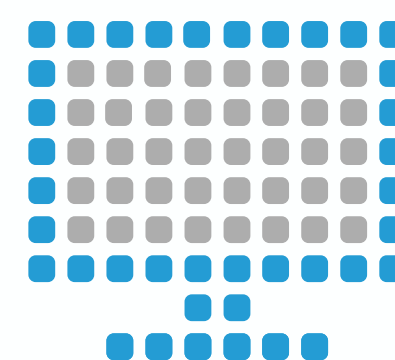


## CROWDFUNDING PLATFORMS

are used to invest by

**45% OF UK ANGELS**

Source - The Economist Intelligence Unit



Approximately **3,800 NEW VENTURES**

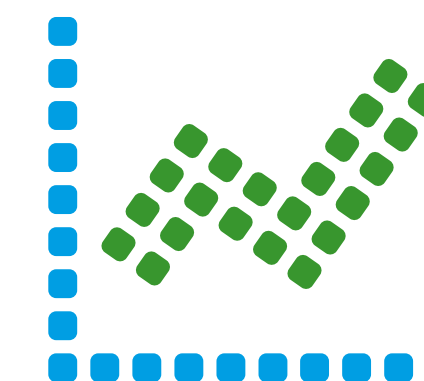
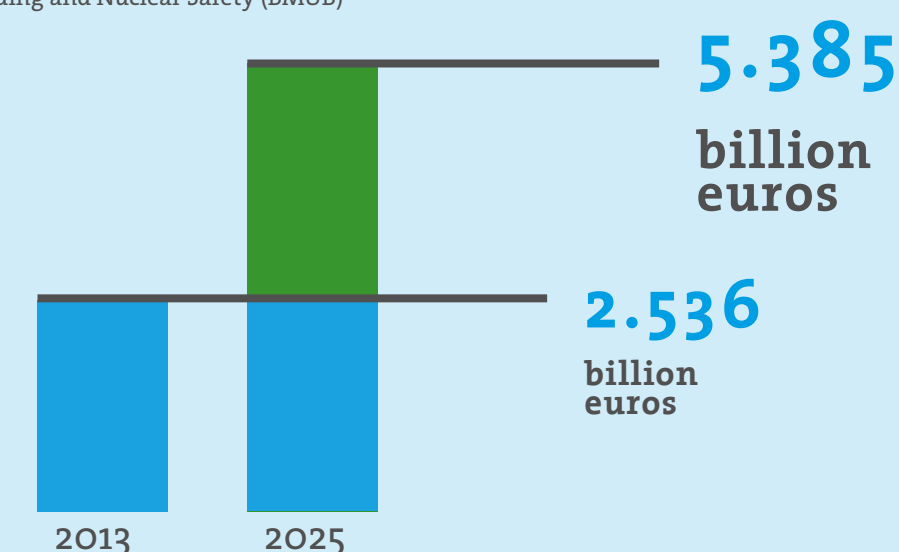
have been supported by over **213 accelerators** worldwide

Source - Nesta

## BY 2025

the global volume of leading **Greentech Markets** is expected to be at least **twice** the size than it is today

Source - German Federal Ministry for the Environment, Nature Conservation, Building and Nuclear Safety (BMUB)



International trade in **environmental goods and services** totals nearly

**US \$1 TRILLION**

per year, or around **5%** of all trade globally

Source - New Climate Economy Report